

IBS 2014

BEST HOME
TECHNOLOGY
PRODUCT



WINNER!



trutankless™

Hot water. Perfected.



You could use more space.

Our smart water heater lets you.

The sad truth.

You know what every inch of space costs you in overhead. So you appreciate tools that help you maximize your investment. But when was the last time you thought about all the ways your tank water heater robs those dollars from your budget?

Storing 80 – 120 gallons of hot water in that clumsy old behemoth of a tank water heater consumes precious, and expensive, space. And it's not just crowding out useful cubic feet — it comes up short in so many other ways:

- : It's based on a design that hasn't been reimagined in more than 100 years.
- : Do you really need hot water when your doors are closed or the tap's not on? Your tank unit works 24 hours a day, even in the absence of hot water demand.
- : Tank water heaters are inflexible in their installation requirements, leaving you few choices in performance.
- : It stays mute when parts start breaking down — failures result in damaging leaks, unexpected inconvenience, unplanned expense and, worst of all, lost business due to a shut down.
- : Tank water heaters have a short life span and need to be replaced every 7 to 10 years.



trutankless®

Introducing: The water heater, evolved.



Compact

At just under 20 inches wide and 4 inches deep, the trutankless® water heater needs no venting and can be installed just about anywhere, so you can make better use of the valuable space in your facility.



Economical

By maintaining near 100% efficiency, trutankless® uses less electricity than tank heaters. Comfort & economy modes plus load shedding capabilities reduce peak power usage.



Dependable

trutankless® systems offer up to 20+ years of maintenance free service with its self-flushing design, saving \$1,500 or more in equipment upkeep and replacement costs.



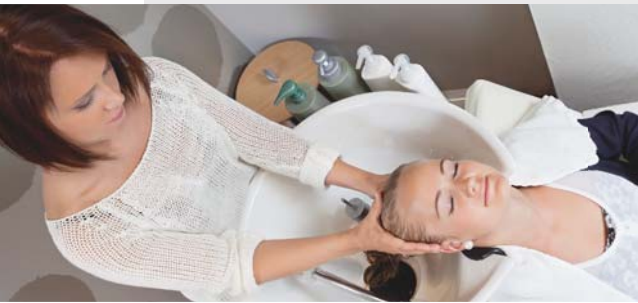
Nimble

A trutankless® system can be installed in a central location, significantly reducing the time it takes to get hot water, and in a variety of customizable configurations to precisely suit your distinctive business needs.



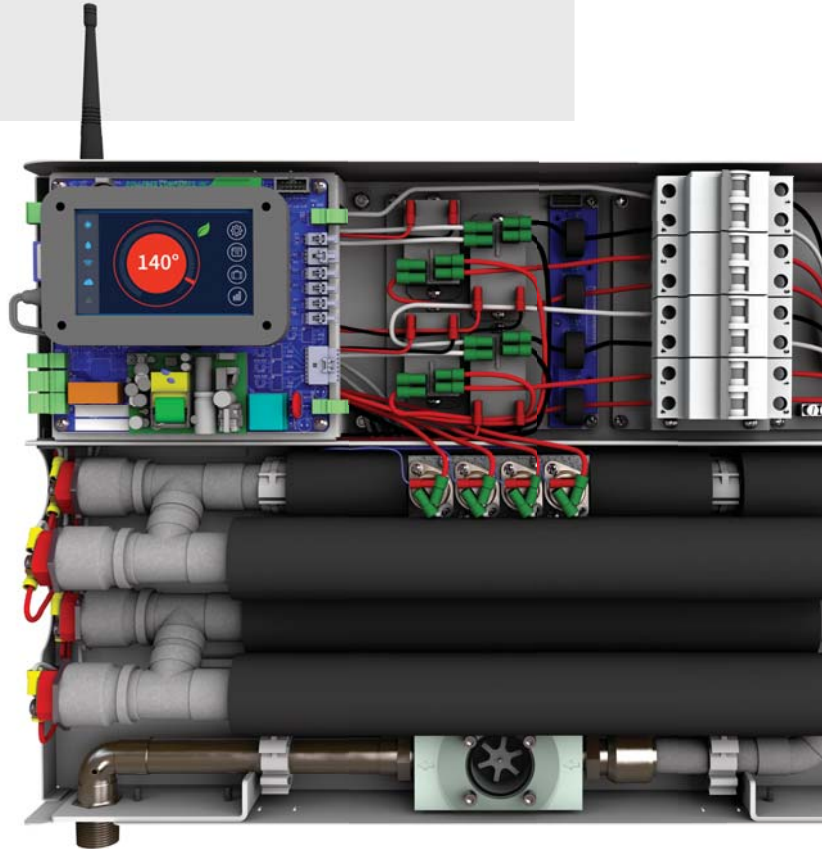
The whole really is greater than the sum of its parts.

Our tankless® line of all-electric water heating products combine several exclusive technologies to save users energy, space, water, and money without compromising convenience, adding efficiency, performance and peace of mind to your bottom line.



Diverse Commercial Applications

- : Restaurants — Quick Serve & Fast Casual
- : Coffee Shops
- : Dentist Offices
- : Doctor Offices
- : Hair Salons
- : Nail Salons
- : Day Spas
- : Convenience Stores
- : Retail Centers
- : Grocery Stores
- : Tourist Cabins
- : Shopping Plazas
- : Office Parks
- : Dry Cleaners
- : HUD Housing
- : Military Housing
- : Laundromats
- : Light Manufacturing
- : Commercial Kitchens
- : Bakeries
- : Auto Repair Shops
- : Marinas
- : Farm & Barn
- : Assisted Living Facilities & Nursing Homes





Introducing Velix Technology

We created a custom heat exchanger for our tankless® product line that utilizes our patent pending Velix technology to heat water as it flows through the system, which means you'll never have to worry about running out of hot water again. Velix technology combines the best materials available and a collection of exclusive features to maximize capacity, minimize energy use, and provide a truly maintenance free experience.

Horizontal Water Flow

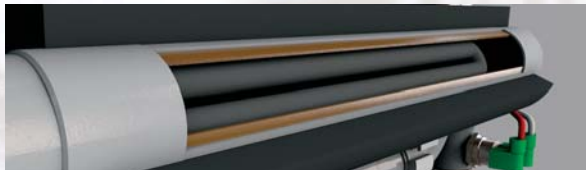
Existing technologies, including solar water heaters, rely on a tank or series of chambers where mineral collection causes users to suffer continual and dramatic decreases in efficiency and capacity. Our exclusive Velix design eliminates this problem because water is heated through a series of self-flushing, horizontal and downward flowing pipes, so there's nowhere for minerals, scale, or other solids to build up.

Velix Tubes

The geometry of our Velix heating system ensures no hotspots can form which prevents scale buildup, decreased output over time, and element failure. Ceramic thermal insulation forces heat into the water where it belongs. The result is a reliable, uniform, and highly efficient transfer of energy into your endless stream of hot water.

Custom Heating Elements

Our purpose-built heating elements were designed to maximize surface area which effectively reduces the operating temperatures required to heat the water. The Velix designed elements employ a stainless alloy to operate more efficiently and last much longer, eliminating the need for routine maintenance.



Our trutankless® all-electric tankless water heater employs highly accurate sensors, robust solid state electronics and proprietary software to power one of the most efficient heat exchangers ever produced.

Performance meets efficiency.



Intelligent

POS operating systems and dashboard monitoring connectivity, remote controls and smartphone alerts are all available for the peace of mind that comes with modern technology.



Reliable

Our engineers incorporated numerous safety features along with technologies like dry-fire defense, freeze protection, smart grid capabilities and leak detection that prevent product failure.



Precise

Our robust and reliable flow meter helps produce hot water at a consistent temperature, within one degree, even if sudden changes to incoming water temperature or flow occur.



Customizable

trutankless® is configured with ideal performance in mind, but with adjustable power management settings at their fingertips, users can further enhance energy usage and performance.

One smart business partner

Two-way communication, 24 hours a day

Replacing an old tank water heater with a trutankless® system lets you keep your finger on the pulse of your business from anywhere, thanks to the App that is available for both iOS and Android mobile devices. Our convenient App allows for remote settings, notifications and monitoring to ensure safe operation. All trutankless® models are compatible with existing facilities automation and energy management systems.

The screenshot displays the trutankless app interface. On the left, a map shows various store locations marked with colored pins. The main panel features a 'Store #130B' header, an image of the trutankless device, and a 'SYSTEM STATUS' section with three icons: a green checkmark, a yellow warning triangle, and a grey exclamation mark. Below this is a blue 'SETTINGS' button. A large red circular gauge on the right shows a temperature of 140°. At the bottom, a table lists store details:

| | | | | | | | | | |
|-------------|--------------|-----|-----|------|-------|-----|-----|---|-----|
| Store #130 | 54 MASON TER | 1.0 | 0.0 | 60.5 | 153.3 | 332 | 120 | 1 | 1.0 |
| Store #130A | 100 MEADOW | 0.5 | 0.0 | 43.0 | 102.5 | 225 | 95 | 1 | 1.0 |
| Store #130B | 10908 BLACK | 0.0 | 6.5 | 3.5 | 8.7 | 19 | 160 | 1 | 1.0 |

Buttons for 'EXPORT CHECKED' and 'Contact us about enterprise data subscription' are visible at the bottom.



State-of-the-Art Features

- : Remote firmware updates
- : Real time remote monitoring
- : Service call notifications
- : Live support
- : Order parts notifications
- : Warranty reminders
- : Remote diagnostics
- : Usage log & fault history
- : Remote temperature setting
- : Leak detection & notification
- : Error notifications
- : Manage user parameters



trutankless.com

8800 N Gainey Center Dr., Suite 270 • Scottsdale, AZ 85258 • 855-TO-BUY-TRU

Lifetime Limited Warranty on Heat Exchanger
Warranty: 3 Years Parts
Extended Manufacturer Warranties Available

Certifications



Membership and Associations



Bollente Companies, Inc.